

# Partnership Brokers Training

Amsterdam 2020

28 September - 1 October

## Join us for Partnership Brokers Training



Multistakeholder and cross-sectoral partnerships are multiplying, but how do we support those guiding and leading partnerships to achieve the “more than the sum of the parts” results we are all seeking?

Drawing on global experience and designed to appeal to **all types of learners** from diverse sectors, this course balances conceptual and practical learning. It creates a safe space to support personal and professional development and is designed specifically for those involved

## This course provides

- A framework for creating robust, efficient and impactful partnerships
- A focus on critical partnership principles, to drive values-based partnerships for stronger results
- Unique, fit for purpose tools and techniques for brokering partnerships that get results
- Enhanced confidence and competence as a partnership practitioner
- Strategies to overcome common and complex partnership challenges
- Personal and professional insights that build competencies to support successful partnerships
- Access to a vibrant global network of over 3,500 alumni and an opportunity to join as a professional member of the Association.

in the challenging work of **brokering and supporting partnerships throughout the project cycle to deliver results and impact.**

Lead by highly experienced Authorised Practitioner Trainers from the Partnership Brokers Association, this **globally sought after training** offers an important opportunity for partnership practitioners to hone their skills with a diverse group of participants from business, non-profit, community, government, education and philanthropy.

The course can also be used for **real-time partnership building** when partners attend the course together and leverage the lessons to guide partnership strategy, management or review.

Successful completion of this course allows the graduate to progress to the Partnership Brokers Accreditation pathway and/or Advanced Skills program.

“ The course was highly applicable to the type of work I do with consortia and networks, and the kind of challenges I am faced with on a day-to-day basis. The material was relevant and helped give perspective to those challenges. The course also enabled the participants to step back and reflect on our own work in relation to what we were learning. I really appreciated the whole experience and went back to my role energised and ready for action.”

COURSE GRADUATE  
LONDON



LEARNING • TRAINING • TRANSFORMING

[www.partnershipbrokers.org](http://www.partnershipbrokers.org)



# Partnership Brokers Training

## Do you manage diverse partnerships & groups?

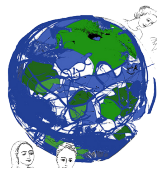
### Who should attend this course?



This training is for active practitioners involved in management and development of multi-stakeholder partnerships and is **not** an introductory course. Participants will have experience working to build effective and innovative collaboration between two or more partners. Past graduates have come from business, government, international agencies and non-profits working in diverse spheres.

**Admission to the course is by application.**

### Further Training Opportunities



Participants who successfully complete the training will be awarded a Partnership Brokers Association certificate and access to a global professional alumni of over 3,500 graduates. PBA alumni may apply for **Advanced Practice** training, including a mentored program leading to professional qualifications as an **Accredited Partnership Broker**.

### Worldwide Training

All training dates and locations worldwide:

[www.bit.ly/PBAtraining](http://www.bit.ly/PBAtraining)

### Partnership Brokers Association



The Partnership Brokers Association, established in 2003, is the international professional body and training resource for those **managing and developing partnership processes**. PBA's training work is informed and regularly updated in consultation with international practitioners.

**PBA is dedicated to promoting professionalism and integrity in brokering multi-stakeholder partnership for sustainable change and impact by:**

- Elevating partnering knowledge and practice so that collaborations can become truly transformational
- Supporting partnership brokers to take a principled and skilled approach to reach the highest standards of partnership excellence
- Promoting the critical importance of the partnering process for decision makers in all sectors to achieve ambitious results

“ The course tackled the main challenges I face in my everyday work, and supplied tools, ideas and guidance to enable me deal with them in a better way. ”

COURSE GRADUATE  
AMSTERDAM

### ENQUIRIES

Please contact:

[hvkampen@xs4all.nl](mailto:hvkampen@xs4all.nl)

### INDICATIVE TIMETABLE

<https://bit.ly/PBAmsterdam>



LEARNING • TRAINING • TRANSFORMING

[www.partnershipbrokers.org](http://www.partnershipbrokers.org)



# Partnership Brokers Training

## Amsterdam 2020

28 September - 1 October

### Trainer

*Our Training Team members are Accredited Partnership Brokers and PBA Authorised Trainers, and are drawn from the most experienced and respected Partnership Brokers in the world. Practitioners first and Trainers second, they have extensive current brokering experience informing their training.*



HELGA VAN KAMPEN - is a partnership specialist, who has worked independently since 2011. As an Accredited Partnership Broker, she supports complex global partnerships in developing, managing, reviewing and moving on processes. Helga supports professionals in the HOW of collaboration. She has worked with a wide variety of organizations from all sectors (Dutch Ministry of Foreign Affairs, Humanitarian and Development Sector, Municipality of Amsterdam, Women Rights organizations, the corporate sector such as Microsoft, Rabobank Foundation as well as multi-stakeholder alliances). She works in the Netherlands and abroad (Ethiopia, South Africa, South-Sudan, Turkey, Nigeria, DR Congo, Egypt, Uganda, Jordan). Helga is an Authorized Practitioner Trainer, Associate & Mentor with the Partnership Brokers Association.

### Application & Fees

The fee for the course is € 1700,00 (excl. 21% VAT) This includes tuition costs, background reading materials, copies of all the training materials, lunches and snacks.

The fee does not include travel or accommodation. The fee will be payable with your application. Your place on the course will be secured only when full payment has been received. Please view our Cancellation policy.

To foster diversity, there is a maximum of four participants from the same organisation allowed to join any one course.

Apply for this course at:

[www.bit.ly/PBAmsterdamApply](http://www.bit.ly/PBAmsterdamApply)



[www.partnershipbrokers.org](http://www.partnershipbrokers.org)

2020 AMSTERDAM

28 September - 1 October

APPLY

[www.bit.ly/PBAmsterdamApply](http://www.bit.ly/PBAmsterdamApply)

ENQUIRIES

Please contact:

[hvkampen@xs4all.nl](mailto:hvkampen@xs4all.nl)



VENUE

Science Park 201  
1098 XH Amsterdam  
Netherlands

Website: <http://www.cafe-restaurantpolder.nl/>

