

Partnership Brokers Training

Hosted by **Safe and Equal**

22 – 25 October 2024 | Melbourne

SAFE + EQUAL

The course has provided me with more tools and approaches to use to help me separate partnership work from project work, and address partnership work appropriately.

COURSE GRADUATE
FROM TARGETED
FAMILY VIOLENCE
COHORT,
AUGUST 2023

Highly recommended for anyone seeking deeper skills and tools to support partnerships.

COURSE GRADUATE,
CANBERRA MAY 2022

A great example of training that covers theory & practice, builds relationships & learning between participants & reaffirms that while partnerships may be messy and complex, they're worth the effort.

COURSE GRADUATE,
CANBERRA MAY 2022

Multistakeholder and cross-sectoral partnerships are multiplying, but how do we support those guiding and leading partnerships to achieve the “more than the sum of the parts” results we are all seeking?

Drawing on global experience and designed to appeal to **all types of learners** from diverse sectors, this **4-day course** balances conceptual and practical learning.

It creates a safe space to support personal and professional development and is designed specifically for those involved in the challenging work of brokering and supporting partnerships, particularly in responding to family and gender-based violence.

Lead by highly experienced Authorised Practitioner Trainers from the Partnership Brokers Association, this **globally sought after training** offers an important opportunity for partnership practitioners to hone their skills.

The course can also be used for **real-time partnership building** when partners attend the course together and leverage the lessons to guide partnership strategy, management or review.

Successful completion of this course allows for progression to the Partnership Brokers Accreditation pathway and / or Advanced Practice programme.

This course provides

- A framework for creating robust, efficient and impactful partnerships
- A focus on critical partnership principles, to drive values-based partnerships for stronger results
- Unique, fit for purpose tools and techniques for brokering partnerships that get results
- Enhanced confidence and competence as a partnership practitioner
- Strategies to overcome common and complex partnership challenges
- Personal and professional insights that build competencies to support successful partnerships
- Access to a vibrant global network of over 4,000 alumni and an opportunity to join as a professional member of the [Association](https://www.partnershipbrokers.org).



PARTNERSHIP
BROKERS ASSOCIATION

www.partnershipbrokers.org



Partnership Brokers Training

I have enjoyed a number of wonderful professional development opportunities throughout my career, but the Partnership Brokers Training is certainly at the top of that list! I believe the content, expert instruction, and inspiring colleagues form a magical product that is second to none!

COURSE GRADUATE,
CANADA

[INDICATIVE TIMETABLE](#)

www.bit.ly/PBTTimetable

[WORLDWIDE TRAINING](#)

All training dates and locations worldwide:
www.bit.ly/PBAtraining

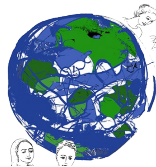


Who should attend this course?

This training is for practitioners working in the response and recovery of family and gender-based violence involved in management and development of multi-stakeholder partnerships and is **not** an introductory course.

Participants will have experience working to build effective and innovative collaboration between two or more partners. Past graduates have come from business, government, international agencies and non-profits working in diverse spheres.

Admission to the course is by application.



Further Training Opportunities

Participants who successfully complete the training will be awarded a Partnership Brokers Association certificate and access to a global professional alumni of over 4,000 graduates.

PBA alumni may apply for **Advanced Practice** training, including a mentored program leading to professional qualifications as an **Accredited Partnership Broker**.

Partnership Brokers Association



The Partnership Brokers Association, established in 2003, is the international professional body and training resource for those **managing and developing partnership processes**. PBA's training work is informed and regularly updated in consultation with international practitioners.

PBA is dedicated to promoting professionalism and integrity in brokering multi-stakeholder partnership for sustainable change and impact by:

- Elevating partnering knowledge and practice so that collaborations can become truly transformational
- Supporting partnership brokers to take a principled and skilled approach to reach the highest standards of partnership excellence
- Promoting the critical importance of the partnering process for decision makers in all sectors to achieve ambitious results



PARTNERSHIP
BROKERS ASSOCIATION

www.partnershipbrokers.org

Partnership Brokers Training

Training Team

Our Training Team members are Accredited Partnership Brokers and PBA Authorised Trainers, and are drawn from the most experienced and respected Partnership Brokers in the world. Practitioners first and Trainers second, they have extensive current brokering experience informing their training.



YESHE SMITH is a highly experienced partnership broker and partnering skills trainer. Her partnering practice developed from over 20 years working in international development, scoping, designing and managing cross-sectoral partnerships for social change across private sector, NGOs, government, community and faith-based organisations, health, education, and research partnerships. Yeshe has specialised in pacific work for over twenty years, and has a particular interest in navigating race and culture in the partnering environment. She now works as an independent partnership broker and trainer with a portfolio of partnership work including ongoing international work in Asia and the Pacific, and a wide range of Australian partnership work in government, health, education and the community sector.



MEGHAN COOPER (she/her) has over 10 years of brokering experience across Australia and the Pacific. Her brokering work has emerged from more than 15 years' experience working in partnerships with and for women's rights organisations in research, advocacy and evaluation, in local, regional and global contexts. She is currently an internal broker working as the Prevention Partnership and Evaluation Manager for Safe and Equal.

Prior to this, she was the Senior Program Manager for International Women's Development Agency (IWDA) overseeing IWDA's funding to women's rights organisations in the Pacific, and supporting IWDA to broker feminist partnerships and coalitions across Asia and the Pacific.

DATES

Tuesday 22 October –
Friday 25 October
2024

VENUE

Multicultural Hub
06 Elizabeth St
Melbourne
VIC 3000

ENQUIRIES

Please contact:

Yeshe Smith

yeshesmith@gmail.com

Ph: 0468 879 101

OR

Meghan Cooper

meghancooper@safeandequal.org.au

Ph: 0435 073 101

TRAINING FEE

\$1,870 (including GST)

[Contact Yeshe Smith](#) for
payment options.

[APPLY NOW](#)

<https://forms.gle/6JPsgR3UCYh71wVK9>



PARTNERSHIP
BROKERS ASSOCIATION

www.partnershipbrokers.org

